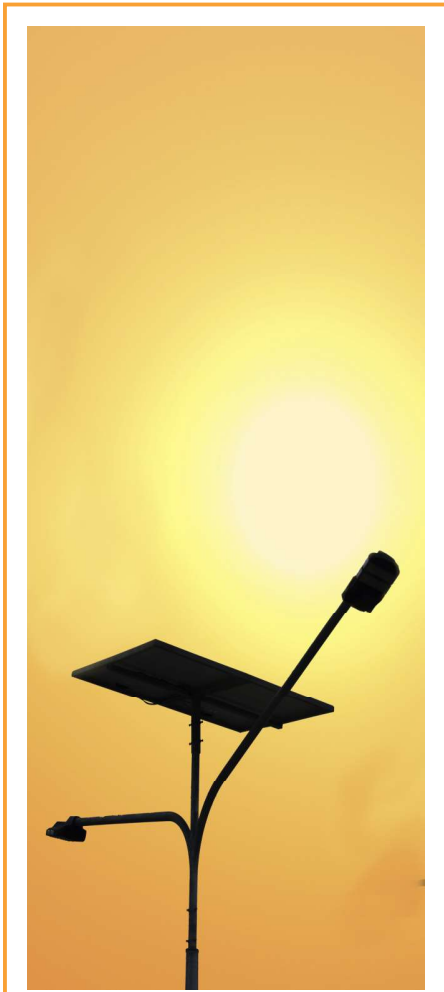


TRANSRAIL SOLAR



Integrated Power Transmission,
Lighting and Solar Solutions

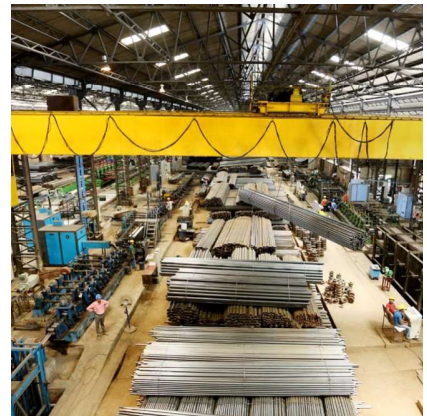
About TRANSRAIL

Transrail Lighting Limited is an integrated company offering turnkey solutions in the field of Power Transmission, Distribution, Rural Electrification, Electrical Sub Station, Overhead Railway Electrification, Solar System and Lighting Solution. An active player in EPC and Turnkey projects having presence in INDIA and global presence in over 35 countries.

At its core, we are a company driven by passion for quality, innovation and excellence.

Having multi location manufacturing and supply facilities within INDIA for galvanised T&D structures, monopoles, high masts, stadium masts, street light poles, flag mast, LED and HID Luminaires and solar lighting systems to cater the needs of our customers.

All our operation are certified for ISO 9001 , ISO 14000, OHSAS certification.



OUR IN-HOUSE CAPABILITIES:



Design



Development



Manufacturing



Testing



Supply and EPC Civil, T&D,
Electrical and Projects

SOLAR LED STREET LIGHT

FEATURES

- Inbuilt battery charge controller
- Affordable and easy to install
- LED chips with high lumen packages having longer life
- Easy installation & low maintenance
- Suitable for all types of battery
- Excellent performance
- Available in different capacities and battery voltage
- Specially designed optics with highest quality lens which will give good uniformity and wider coverage area



PRODUCT INFORMATION

Housing	Aluminium PDC, Single piece
Finish	Black Powder Coated
IP Rating	IP 66
Operating Temp	(-40 ^ c To 60 ^ c)
Input Voltage	12/24v
LED Rating	50,000 Hours L70
p.f.	>0.95
CCT	2700 - 6500 K
CRI	> 70
THD	<10%
LED Luminous Flux	900 - 27500 Nominal Lumens
Mechanical Impact Resistance	IK08 (Body & Frame Only)

MODEL	WATTAGE [W]*	EFFICACY	LUMENS
TLL-MARS-SL	7W - 48W	>110	>700 - 5280
TLL-VENUS-SL	60W - 80W	>110	>6600 - 8800
TLL-VENUS-SL	100W - 250W	>110	>11000 - 27500

* Other wattages available on request



SOLAR LED FLOOD LIGHTS

FEATURES

- Inbuilt battery charge controller
- Affordable and easy to install
- LED chips with high lumen packages having longer life
- Easy installation & low maintenance
- Suitable for all types of battery
- Excellent performance
- Available in different capacities and battery voltage
- Specially designed optics with highest quality lens which will give good uniformity and wider coverage area



PRODUCT INFORMATION

Frame Colour	Black
IP Rating	IP 66
Operating Temp	(-40 ^ c To 60 ^ c)
Input Voltage	12/24v
LED Rating	50,000 Hours L70
p.f.	>0.95
CCT	2700 - 6500 K
CRI	> 70
THD	< 10%
LED Luminous Flux	900 - 27500 Nominal Lumens
Mechanical Impact Resistance	IK08 (Body & Frame Only)

LED FLOOD LIGHT

MODEL	WATTAGE [W]*	EFFICACY	LUMENS
TLL-PLUTO-FL	20W - 60W	>110	>2200 - 6600
TLL-PLUTO-FL	80W - 150W	>110	>8800 - 16500
TLL-PLUTO-FL	180W - 300W	>110	>19800 - 33000

* Other wattages available on request



SOLAR HYBRID LED STREET LIGHTS

FEATURES

- Inbuilt battery charge controller
- Working on both DC and AC input
- Prefers solar power
- Automatically switch from DC to AC when battery is fully discharged
- Affordable and easy to install
- Confirm IP 66
- Available with aluminium housing
- LED chips with high lumen packages having longer life
- Easy installation & low maintenance
- Suited for all battery types
- Excellent performance
- Available in different capacities and battery voltage
- Specially designed optics with highest quality lens which will give good uniformity and wider coverage area

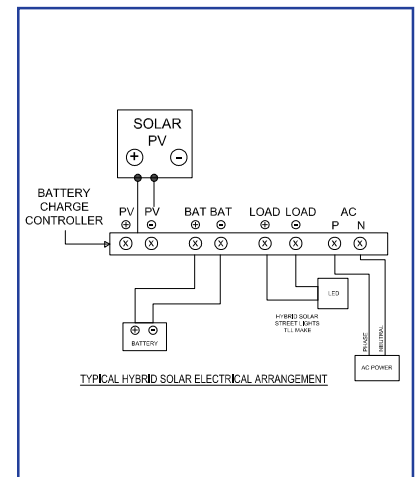


PRODUCT INFORMATION

Frame Colour	Black Powder Coated
IP Rating	IP 66
Operating Temp	(-40 ^ c To 60 ^ c)
Input Voltage	24v/90-270v AC 50Hz
LED Rating	50,000 Hours L70
p.f.	>0.95
CCT	2700 - 6500 K
CRI	> 70
THD	< 10%
LED Luminous Flux	900 - 27500 Nominal Lumens
Mechanical Impact Resistance	IK08 (Body & Frame Only)

HYBRID LED STREET LIGHT

MODEL	WATTAGE [W]*	EFFICACY	LUMENS
TLL-EARTH-HSL	60W - 150W	>110	>6600 - 16500
TLL-VENUS-SL	180W - 250W	>110	>19800 - 27500



* Other wattages available on request

SOLAR HYBRID LED FLOOD LIGHTS

FEATURES

- Inbuilt battery charge controller
- Working on both DC and AC input
- Prefers solar power
- Automatically switch from DC to AC when battery is fully discharged
- Affordable and easy to install
- Confirm IP 66
- Available with aluminium housing
- LED chips with high lumen packages having longer life
- Easy installation & low maintenance
- Suited for all battery types
- Excellent performance
- Available in different capacities and battery voltage
- Specially designed optics with highest quality lens which will give good uniformity and wider coverage area



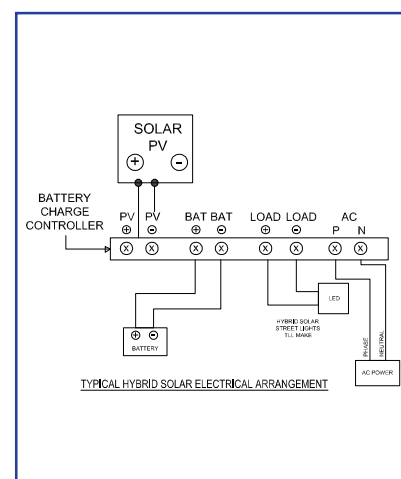
PRODUCT INFORMATION

Frame Colour	Black
IP Rating	IP 66
Operating Temp	(-40 ^ c To 60 ^ c)
Input Voltage	12/24v/90-270v AC 50Hz
LED Rating	50,000 Hours L70
p.f.	>0.95
CCT	2700 - 6500 K
CRI	> 70
THD	< 10%
LED Luminous Flux	900 - 27500 Nominal Lumens
Mechanical Impact Resistance	IK08 (Body & Frame Only)

SOLAR HYBRID LED FLOOD LIGHT

MODEL	WATTAGE [W]*	EFFICACY	LUMENS
TLL-SUN-HFL	20W - 60W	>110	>2200 - 6600
TLL-SUN-HFL	80W - 150W	>110	>8800 - 16500
TLL-SUN-HFL	180W - 300W	>110	>19800 - 33000

* Other wattages available on request



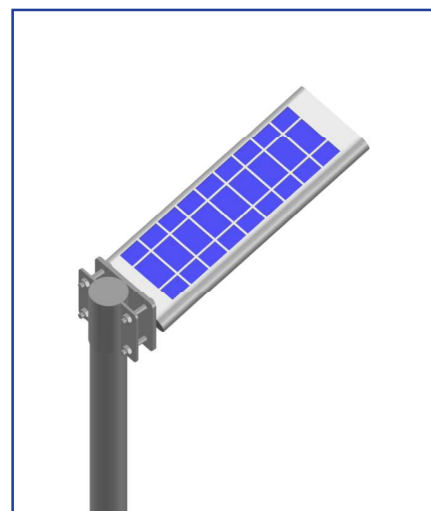
ALL IN ONE SOLAR STREET LIGHT



ALL in ONE



2 in 1



ALL in ONE

FEATURES

- Introducing a revolutionary new solar street light with all-in-one features designed to transform the segment forever and provide ideal solutions in street lighting.
- Transrail All-in-One offers high brightness, compact and aesthetic design with a long life, smart PIR sensors that modify lighting according to human presence. It truly is the light of future.
- Integrated design of solar panel, LED light and inbuilt battery having encompassing street light design.
- Application: Urban roads, residential layouts, parks, public gardens, industrial & commercial campuses, etc.

2 in 1 STREET LIGHT

MODEL	WATTAGE [W]*	EFFICACY	LUMENS	WEIGHT	DIMENSION
TLL-JUPITER-TIO	7W - 48W	>110	>2200 - 6600	1.3 KG	355X110X63
TLL-JUPITER-TIO	60W - 80W	>110	>8800 - 16500	1.3 KG	355X110X63
TLL-JUPITER-TIO	90W - 100W	>110	>19800 - 33000	1.3 KG	355X110X63

* Other wattages available on request



STAND ALONE SOLAR STREET LIGHT

FEATURES

- No trenching, cabling or wiring
- Storable and retrievable form of energy
- No pollution, environment friendly and less operational cost
- Does not require skilled manpower to operate
- Illuminates remote place where grid supply is not available
- Longer life with minimum maintenance
- More safe and easy to install
- Support for green initiative
- Solar wing of Transrail Lighting Ltd
- Qualified and experienced team of lighting engineers
- Exhaustive range of luminaries for all solar applications
- Network of branches spread across entire India
- Inbuilt charge controller



PRODUCT INFORMATION

Frame Colour	Black
IP Rating	IP 66
Operating Temp	(-40 °C To 60 °C)
Input Voltage	12/24V/90 To 270 V AC 50 Hz
LED Rating	50,000 Hours L70
p.f.	>0.95
CCT	2700 - 6500 K
CRI	> 70
THD	< 10%
LED Luminous Flux	900 - 27500 Nominal Lumens
Mechanical Impact Resistance	IK08 (Body & Frame Only)

STANDALONE SOLAR LED STREET LIGHT

MODEL	WATTAGE [W]*	POLE HEIGHT	BATTERY TYPE	AUTONOMY
TLL-MERCURY-SA	7W - 48W	4 - 7m	DESIGN FOR ALL BATTERY TYPE	1 - 3 DAYS
TLL-MERCURY-SA	60W - 80W	6 - 8m	DESIGN FOR ALL BATTERY TYPE	1 - 2 DAYS
TLL-MERCURY-SA	100W - 250W	8 - 12m	DESIGN FOR ALL BATTERY TYPE	1 DAY



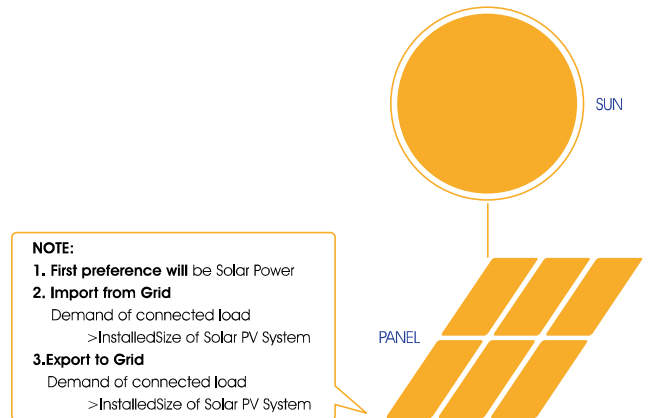
* Other wattages available on request

ROOF TOP

GRID TIED SOLAR POWER SYSTEMS

Smartest way to reduce electricity bills.

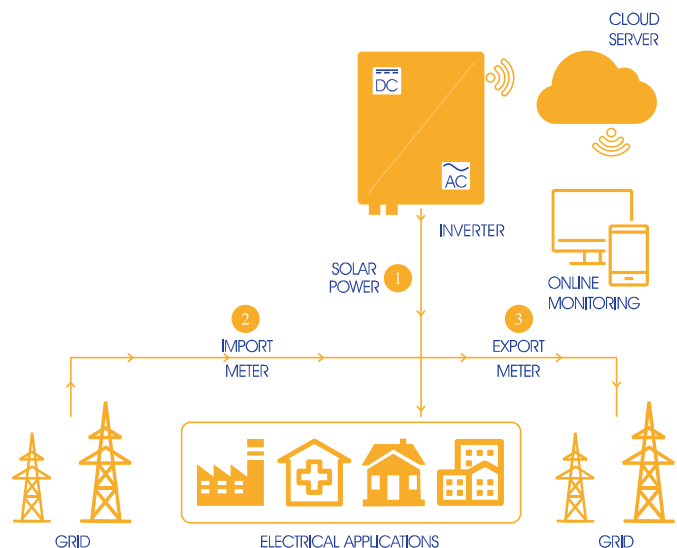
Grid Connected roof top systems consist of an array of the highest quality PV modules installed on rooftop. These panels are connected to a Bi-directional Utility Meter, enabling all excess power to be sold back to the Grid. This system eliminates the use of batteries thus providing an optimum power production. Grid connected Solar PV power systems range from small **1KW** systems to massive **1 MW** systems.



COMPLETELY INDEPENDENT SOLAR OFF GRID POWER SYSTEM

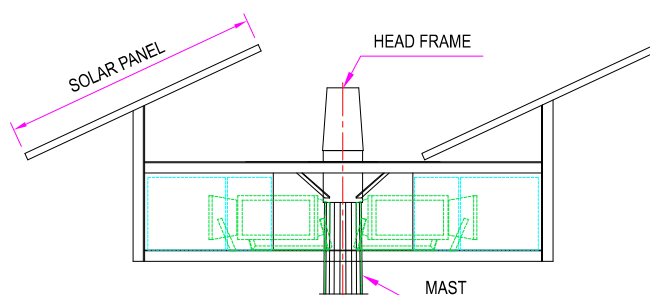
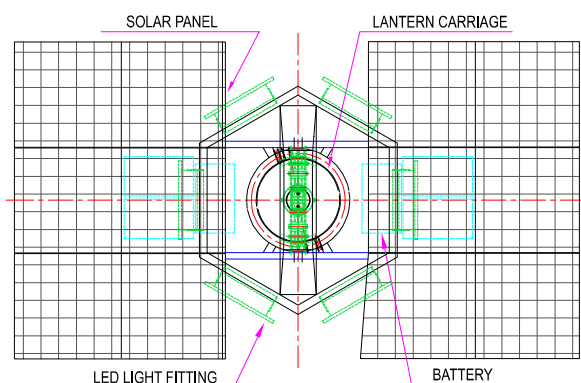
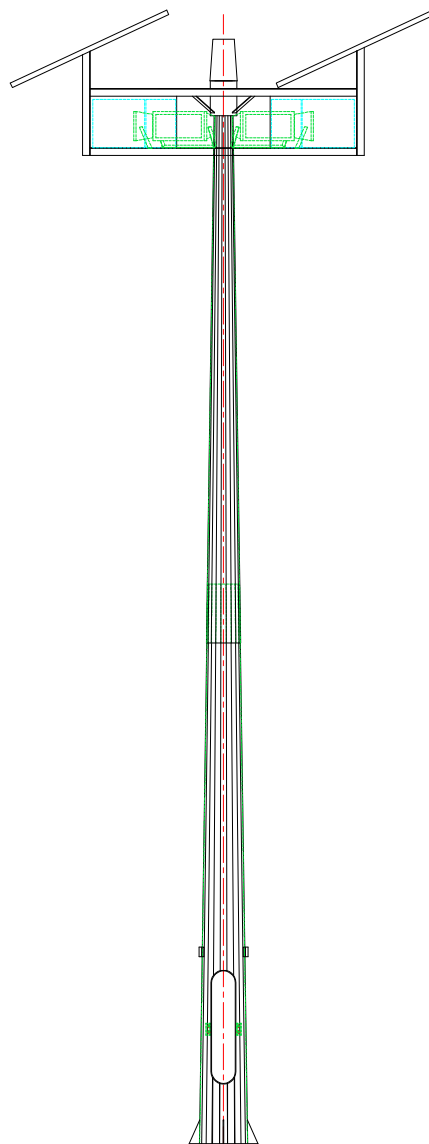
This consists of high quality PV Module, which stores Power in High Quality and fast charging batteries. This power from batteries is further drawn by load via Off Grid Inverter.

Off Grid Solar PV Power System Range:
≥ 1kW



SOLAR HIGH MAST

- System Comprises of high efficient, durable, weather proof construction SOLAR lighting mini mast suitable for 80W to 240W for 10/12 hrs operation with 1 day autonomy
- Charge controller, Battery and related electrical accessories on the lantern carriage having weather proof construction
- 4 to 6 nos. of LED Street and Flood light of IP 66 PDC aluminium housing, SMD type LED having > 100 LPW with an option of secondary optical lens arrangement for improved lighting performance to provide general lighting
- Manually operated winch or Electro mechanically motorized winch operations
- Applications: Traffic Junctions, Car Parks and Area Lighting



CERTIFICATES

DNV·GL

Site certificate No.: 174480CC1-2015-AE-IND-RvA
Initial certification date: 10, March, 2009
Valid: 10, March, 2018 - 09, March, 2021
Belongs to Central Office Certificate No.: 174480-2015-AE-IND-RvA

This is to certify that the management system of

Transrail Lighting Limited

Corporate & Registered Office: Fortune - 2000, A - Wing, 5th Floor, Bharat Nagar, Near SEBI/Wockhardt Hospital, Bandra - Kuria Complex (BKC), Bandra (E)/Kurla (W), Mumbai - 400 051, Maharashtra, India

has been found to conform to the Environmental Management System standard:
ISO 14001:2015

This certificate is valid for the following scope:

Design, development, engineering, procurement & support processes related to supply of steel towers for overhead electrical transmission lines, substation structures, rural electrification structure, railway electrification structure, microwave towers & similar structures, transmission, distribution & other poles, stadium masts, high mast systems, gantries & accessories, other structures, railway structures for turnkey projects, EC & aluminium alloy wire rods and overhead bare conductors for 11 KV to 1200 KV

Design of lighting luminaries

Place and date:
Chennai, 16, January, 2018



For the issuing office:
DNV GL - Business Assurance
ROMA, No. 10, GST Road, Alandur,
Chennai - 600 016, India

Sivadasan Madiyath
Management Representative

Lack of fulfillment of conditions as set out in the Certification Agreement may render this Certificate invalid.
ACCREDITED UNIT: DNV GL Business Assurance B.V., ZWOERVEN 1, 3991 LB, BARNHOUT, NETHERLANDS. TEL: +31102922689.
assurance.dnvgl.com

DNV·GL

Site certificate No.: 177149CC1-2015-AQ-IND-RvA
Initial certification date: 10, March, 2009
Valid: 10, March, 2018 - 09, March, 2021
Belongs to Central Office Certificate No.: 177149-2015-AQ-IND-RvA

This is to certify that the management system of

Transrail Lighting Limited

Corporate & Registered Office: Fortune - 2000, A - Wing, 5th Floor, Bharat Nagar, Near SEBI/Wockhardt Hospital, Bandra - Kuria Complex (BKC), Bandra (E)/Kurla (W), Mumbai - 400 051, Maharashtra, India

has been found to conform to the Quality Management System standard:
ISO 9001:2015

This certificate is valid for the following scope:

Design, development, engineering, procurement & support processes related to supply of steel towers for overhead electrical transmission lines, substation structures, rural electrification structure, railway electrification structure, microwave towers & similar structures, transmission, distribution & other poles, stadium masts, high mast systems, gantries & accessories, other structures, railway structures for turnkey projects, EC & aluminium alloy wire rods and overhead bare conductors for 11 KV to 1200 KV

Design of lighting luminaries

Place and date:
Chennai, 16, January, 2018



For the issuing office:
DNV GL - Business Assurance
ROMA, No. 10, GST Road, Alandur,
Chennai - 600 016, India

Sivadasan Madiyath
Management Representative

Lack of fulfillment of conditions as set out in the Certification Agreement may render this Certificate invalid.
ACCREDITED UNIT: DNV GL Business Assurance B.V., ZWOERVEN 1, 3991 LB, BARNHOUT, NETHERLANDS. TEL: +31102922689.
assurance.dnvgl.com

DNV·GL

Site certificate No.: 174482CC1-2015-HSO-IND-DNV
Initial certification date: 10, March, 2009
Valid: 10, March, 2018 - 09, March, 2021
Belongs to Central Office Certificate No.: 174482-2015-HSO-IND-DNV

This is to certify that the management system of

Transrail Lighting Limited

Corporate & Registered Office: Fortune - 2000, A - Wing, 5th Floor, Bharat Nagar, Near SEBI/Wockhardt Hospital, Bandra - Kuria Complex (BKC), Bandra (E)/Kurla (W), Mumbai - 400 051, Maharashtra, India

has been found to conform to the Occupational Health and Safety Management System standard:
OHSAS 18001:2007

This certificate is valid for the following scope:

Design, development, engineering, procurement & support processes related to supply of steel towers for overhead electrical transmission lines, substation structures, rural electrification structure, railway electrification structure, microwave towers & similar structures, transmission, distribution & other poles, stadium masts, high mast systems, gantries & accessories, other structures, railway structures for turnkey projects, EC & aluminium alloy wire rods and overhead bare conductors for 11 KV to 1200 KV

Design of lighting luminaries

Place and date:
Chennai, 16, January, 2018



For the issuing office:
DNV GL - Business Assurance
ROMA, No. 10, GST Road, Alandur,
Chennai - 600 016, India

Sivadasan Madiyath
Management Representative

Lack of fulfillment of conditions as set out in the Certification Agreement may render this Certificate invalid.
CERTIFYING UNIT: DNV GL BUSINESS ASSURANCE INDIA PRIVATE LIMITED, ROMA, No. 10, GST Road, Alandur, Chennai, 600 016, India.

DNV·GL

MANAGEMENT SYSTEM CERTIFICATE

Site certificate No.: 174480CC7-2015-AE-IND-RvA
Initial certification date: 10, March, 2009
Valid: 10, March, 2018 - 09, March, 2021
Belongs to Central Office Certificate No.: 174480-2015-AE-IND-RvA

This is to certify that the management system of

Transrail Lighting Limited

Survey No. 227/1/1/1/1/1, 228/2, 228/3, 228/4, 228/5, Khanvel Kherdi Road, Kherdi Village, Silvassa - 396 230, Union Territory of Dadra & Nagar Haveli, India

has been found to conform to the Environmental Management System standard:
ISO 14001:2015

This certificate is valid for the following scope:

Manufacture and supply of transmission, distribution & other poles, stadium masts, high mast systems, gantries & accessories, other structures, railway structures, supply of lighting luminaries

Place and date:
Chennai, 16, January, 2018



For the issuing office:
DNV GL - Business Assurance
ROMA, No. 10, GST Road, Alandur,
Chennai - 600 016, India

Sivadasan Madiyath
Management Representative

Lack of fulfillment of conditions as set out in the Certification Agreement may render this Certificate invalid.
ACCREDITED UNIT: DNV GL BUSINESS ASSURANCE B.V., ZWOERVEN 1, 3991 LB, BARNHOUT, NETHERLANDS. TEL: +31102922689.
assurance.dnvgl.com



LIGHTING



POLES

CORPORATE OFFICE

Transrail Lighting Limited

501 A, B, C, E Fortune 2000, Block G, Bandra Kurla Complex, Bandra East, Mumbai - 400 051, India.

Tel: +91-22-6197 9600 | Fax: +91-22-6197 9666 | Email: enquiry@transrailighting.com | Web: www.transrail.in

MANUFACTURING UNIT

Silvassa Plant (Poles)

Survey No. 227/1, 227/2, 227/3, 227/4, 227/5, Khanvel, Talasari Road, Opp HPCL, Kherdi Village, Silvassa - 396 230 .

Tel: +91-260 2641 666 | Fax: +91-260 2631 666



Disclaimer: every endeavor have been made in compilation of the technical details in this catalogue for correctness. Product installation and other images are for reference and representation purpose. Due to continuous improvements in Technology, Standards, and specifications; content are subject to change without prior notice. Contact nearest TRANSRAIL office or its representative for latest update and information. Copying, reproducing and sharing of the details in part or full is subject to prior consent and approval of TRANSRAIL