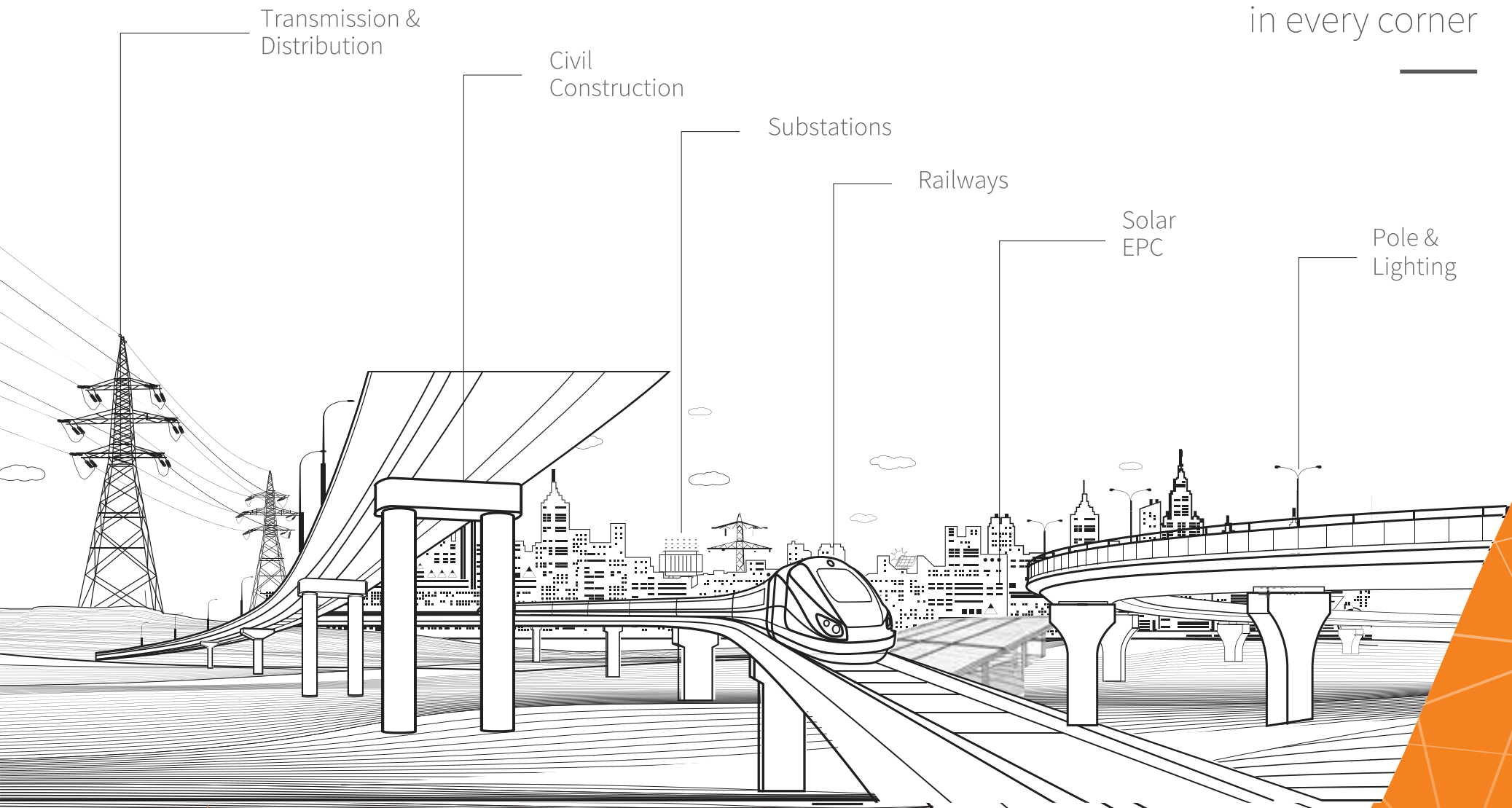




## Touching lives in every corner



## About Transrail

---

Transrail Lighting Limited a leading Infrastructure turnkey solutions provider, with a strong lineage of 4 decades catering to customers across the globe.

We provide comprehensive solutions on a turnkey basis, with presence across Power transmission distribution, Substations, Civil Construction, Railways and Pole & lighting.

We have our in-house large scale manufacturing facilities india for Galvanized Lattice Towers, Conductors & Galvanised polygonal Poles apart from our well accredited R&D facility

40<sup>Years</sup>  
Experience

58<sup>Countries</sup>  
Transrails Global Footprint

1,300,000<sup>MT</sup>  
Lattice Towers Supplied

190,000<sup>KM</sup>  
Conductors supplied

34,400<sup>CKM</sup>  
Transmission lines constructed

384<sup>TKM</sup>  
Railway electrification

476<sup>Towers</sup>  
Proto tested of various types

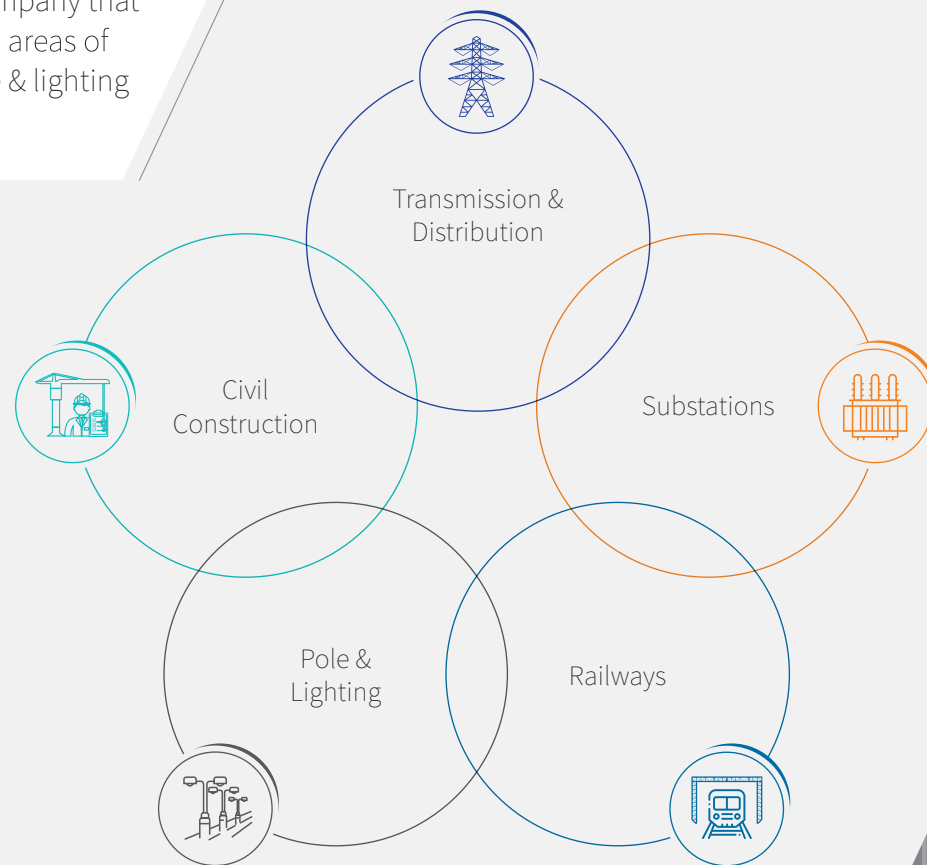
460,000  
Streetlights and high masts supplied

30,000<sup>CKM</sup>  
Distribution network created

10.20<sup>KM</sup>  
Constructing Indians longest river bridge

## Our Business Verticals

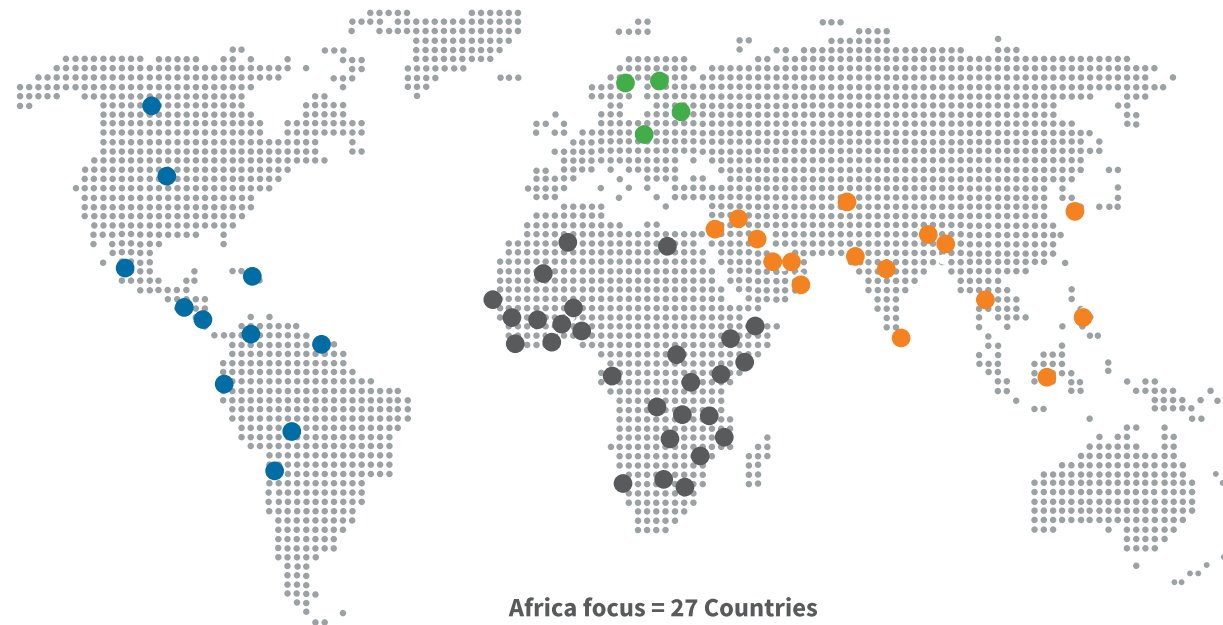
We are an integrated infrastructure company that offers quality-oriented solutions in the areas of Power T&D, substations, railways, pole & lighting infrastructure and civil construction.



# Our Geographical Footprint



At Transrail Lighting Limited, we have expanded our presence and reach across the lengths and breadths of the globe. We have emerged as a global player with a strong presence in **58 countries** across the world. On the domestic front, we are pan-India Company, having executed projects in all corners of India.



Africa focus = 27 Countries

## Our Global Presence

### Americas

- |                       |              |
|-----------------------|--------------|
| 1. Canada             | 7. Equador   |
| 2. USA                | 8. Bolivia   |
| 3. Dominican Republic | 9. Chile     |
| 4. Guatemala          | 10. Colombia |
| 5. Nicaragua          | 11. Suriname |
| 6. Mexico             |              |

### Europe

- |             |
|-------------|
| 12. Finland |
| 13. Poland  |
| 14. Sweden  |
| 15. Latvia  |

### Africa

- |                  |              |                 |
|------------------|--------------|-----------------|
| 16. Algeria      | 25. Nigeria  | 34. Rwanda      |
| 17. Mali         | 26. Ghana    | 35. Tanzania    |
| 18. Benin        | 27. Liberia  | 36. Zambia      |
| 19. Burkina Faso | 28. Ethiopia | 37. Mozambique  |
| 20. The Gambia   | 29. Somalia  | 38. Botswana    |
| 21. Togo         | 30. Kenya    | 39. Egypt       |
| 22. Uganda       | 31. Niger    | 40. Eswatini    |
| 23. Burundi      | 32. Cameroon | 41. Ivory Coast |
| 24. Namibia      | 33. Gabon    | 42. Senegal     |

### Asia

- |                 |                 |                 |
|-----------------|-----------------|-----------------|
| 43. Afghanistan | 50. Bhutan      | 57. South Korea |
| 44. Jordan      | 51. Bangladesh  | 58. Iraq        |
| 45. Kuwait      | 52. India       |                 |
| 46. Qatar       | 53. Sri Lanka   |                 |
| 47. UAE         | 54. Philippines |                 |
| 48. Oman        | 55. Indonesia   |                 |
| 49. Nepal       | 56. Thailand    |                 |

# Transrail Lighting Limited



Scan for  
[www.transrail.in](http://www.transrail.in)



## Our Business Verticals

### Transmission & Distribution

---

Transmission and Distribution (T&D) is a core vertical of Transrail Lighting Limited. We undertake turnkey projects including designing, manufacturing, testing, supply and constructing and commissioning Transmission Lines and Distribution networks across various geographies.

We are a partner of choice globally and have demonstrated our expertise by executing challenging projects across various terrains and environments. Our long experience; strong project management capabilities; excellent design and engineering capabilities; dedicated and talented team; and strong and reliable network of sub-contractors, suppliers and vendors are key factors for value creation.

We have a record of constructing :

- 6,100 CKM - 765 kV & above
- 13,000 CKM - 132 kV < & > 765 kV
- 11,700 CKM - 132 kV & below
- 1,400 CKM - Special projects
- 32,200 CKM - Total Transmission Lines**

**34,400** CKM  
Transmission lines constructed



*1200 kV Wardha Aurangabad TL*

# Impeccable track record on quality & execution

We have been at forefront in last mile connectivity through our distribution projects. We have brought electricity to innumerable households in India and Abroad.

Our meticulous planning, zeal to expand the electricity reach and relevant experience has resulted in our success in timely completing distribution projects.

**Distribution lines of over 30,000 CKM**



*Our rural electrification project in Kenya*





## Our Business Verticals

### Substations

# Strong integrated capabilities

We have capabilities to execute variety of substation up to 400 kV, both in AIS & GIS. We have undertaken several Substation projects on turnkey basis in India, Africa and Americas.

Our Services include design and engineering, procurement, supply, installation and commissioning. We have established strategic associations in order to provide holistic solutions globally.

As part of our integrated services, we undertake Underground cabling projects in India and outside. We have finished 220 kV underground cabling projects in India and have on-going projects outside of India.

400<sub>kV</sub>  
Substations Capabilities

400 kV Mandsaur Substation





## Our Business Verticals

### Civil Construction

---

A reliable EPC partner  
for challenging civil  
construction projects

At Transrail, we provide integrated infrastructure solutions. With strong project management lineage and good practises, we are delivering quality and efficiency in our civil construction vertical. We provide turnkey construction services for bridges; elevated roads; tunnels and other forms of infrastructure.

We are constructing India's longest river bridge with a length of over 10 KM.

10.20<sub>KM</sub>

Constructing India's longest River Bridge

*Kosi River Bridge project*

## Our Business Verticals

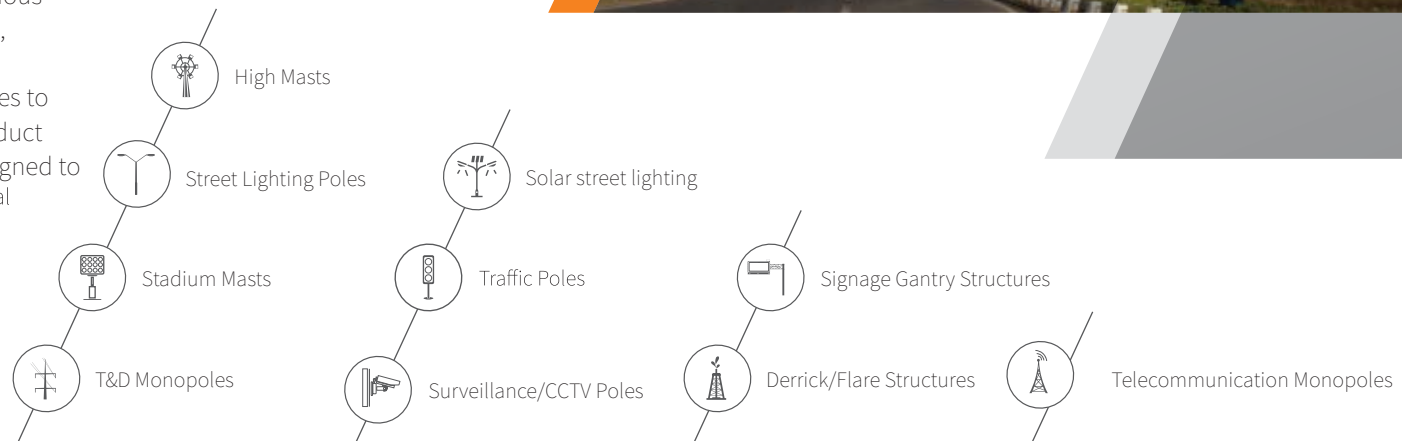
### Pole and Lighting

# Amongst the top Pole and Lighting Solution provider

Transrail Lighting is one of the leading and most recognised names in the lighting infrastructure industry. We have a long history of success in the lighting solutions business, with a vision to be at the forefront of innovative and viable solutions.

We excel in designing pole structures for various applications such as high masts, streetlights, distribution monopoles and stadium masts, amongst others. We have dedicated ourselves to deliver highest standards of quality and product performance. Our poles are structurally designed to stringent specifications that meet or exceed global standards.

#### Our Product Range



*Poles supplied at GIFT city*

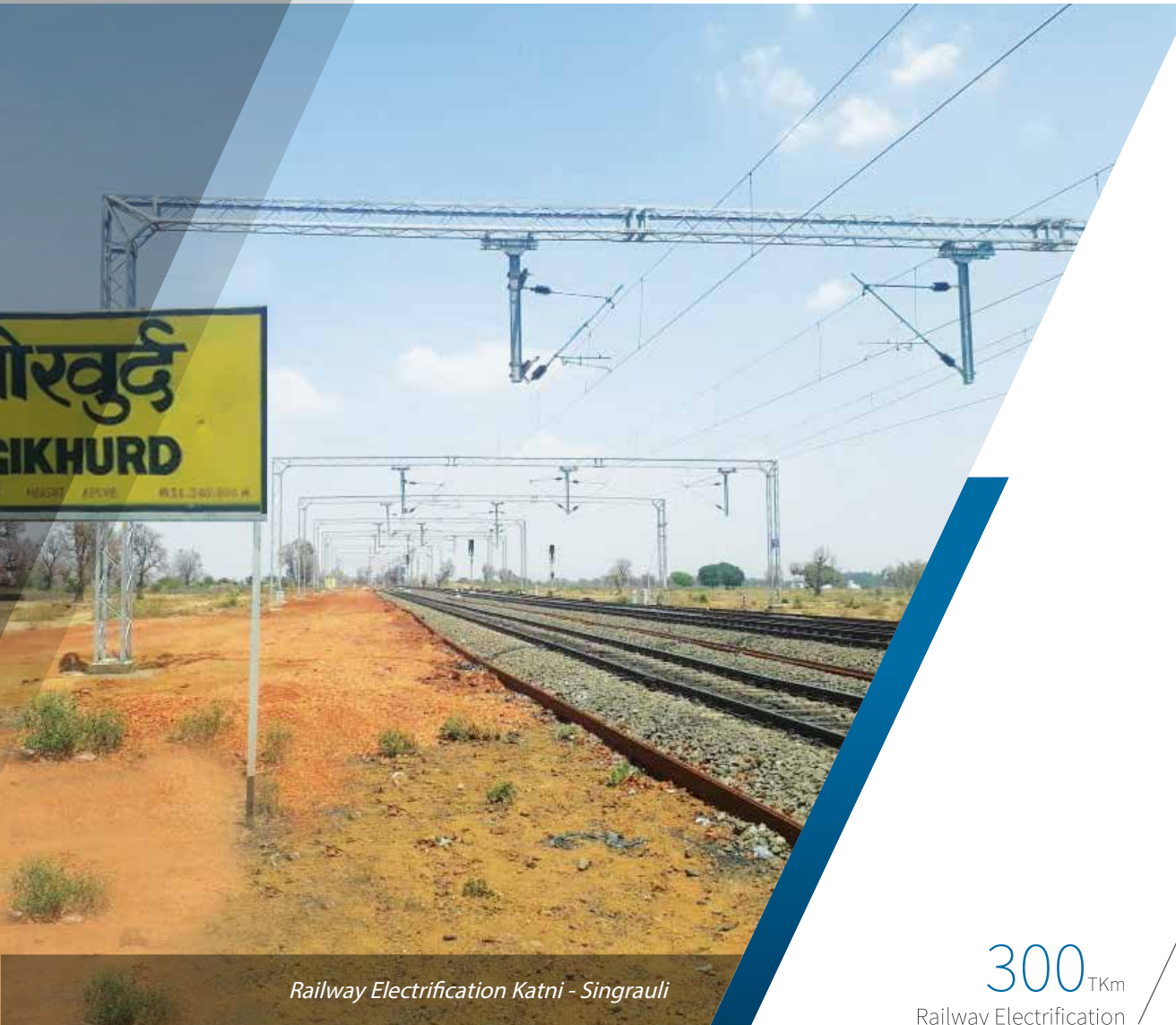


## Our Business Verticals Railways

# A valuable solutions partner to railways

We are undertaking railway projects for the electrification, earthwork, signalling, and telecommunications, amongst others.

We have dedicated team of experience engineers resulting in on time delivery of our railway projects.



*Railway Electrification Katni - Singrauli*




300<sup>TKm</sup>  
Railway Electrification





## Our Manufacturing Units

Transrail is a manufacturing powerhouse for integrated solutions.

	 Towers	 Conductors	 Poles
Locations	Vadodara, India Deoli, Wardha, India	Silvassa, India	Silvassa, India
Year of Establishment	1994 2010	2007	2010
Manufacturing Capacity (Tonnes/per year)	36,000 65,000	60,000	25,000



*Tower Factory - Vadodara*



*Pole Factory - Silvassa*



*Conductor Factory - Silvassa*



*Galvanizing Plant - Deoli*

## Tower Testing Station

---

We possess state-of-the-art tower testing facility that is fully automatic with Supervisory Control & Data Acquisition (SCADA) software technology. We have designed and tested more than 400 types of towers upto 800 kV for our Indian as well as global clients.

The testing facility can test towers with maximum height of 85 m (280 ft), maximum base width of 30 m (100 ft) with multiple loading combinations upto 63 numbers.

Our capability to test self-supporting towers upto 1200 kV, Guyed Towers upto 735 kV and Transmission Monopoles upto 500 kV adds to our competencies. We have tested towers for our clients across the globe.





## Our Certifications

We are certified with ISO 9001:2015, ISO 14001:2015, ISO 27000:2013 and ISO 45001:2018. This ensures exceptional quality commitment, environmental management and employee safety. We are also a CE certified company. Our tower testing and conductor facilities have also been accredited by National Accreditation Board for Testing and Calibration Laboratories (NABL).



## Health, Safety & Environment

Health & Safety of our work force is of most importance to us and we take pride in our industry leading practices which has consistently resulted in awards and recognition.





## Our Human Capital

Human capital is pivotal to Transrail's continued ability to deliver projects ahead of time. We continue to be the preferred employer in the construction and infrastructure sector for all existing as well as potential employees. To this end, we strive to nurture a transparent performance-driven environment within the organisation to motivate and empower our people. Our diverse, professional, and empowered workforce helps us create remarkable value for our stakeholders, deliver excellence to our clients, and establish our leadership position.

In our quest for continuous improvement, we endeavour to provide the right development and growth opportunities to our employees, through several bespoke interventions. From ensuring culture assimilation through workshops – Capabilities and Values Workshops to building strong technical, functional and behavioural capabilities, we continue to enhance the fungibility of our talent in line with our diversified businesses through blended learning – digital, classroom, experiential and virtual instructor-led learning programmes.

A diverse team of more than **1500 employees** with skills and passion to push the boundaries to achieve highest quality, efficiency and value.



## ESG

At Transrail, we are deeply committed towards developing a 'way of life' which is focused on sustainable development goals. While on the one hand we are striving to reduce our environmental footprint to bring positive social change on the other, we continue to reinforce the highest standards of corporate governance.

### Environment:

We at Transrail hold with pride that our business processes have minimum negative environmental impact. By adopting environment friendly strategies of Reduce, Recycle and Re-use we ensure protection and enrichment of our environment.

### Social:

At Transrail we take pride in contributing to society with key focus on Healthcare including preventive healthcare, promoting education and rural development, skill development etc. We partnered with various NGOs with domain expertise and credibility to deliver beneficial results. We at Transrail promote gender diversity and we highly value women contribution to our organizational goals.

### Governance:

Ensuring strong corporate governance policies and practices are of prime importance to us at Transrail. It is deeply rooted in our corporate belief that we need to follow these policies to meet competency, sustainability, and reliability.





## Our CSR initiatives

We believe that the growth of our company is intrinsically linked to the well-being of the community at large. Our CSR activities focus on health care and education. This year we endeavored to do our best for facilitating health care under “Transrail Aarogya” a CSR health initiative. We strengthened community Health Centers with medical equipment and ambulances services for promoting quality healthcare facilities to vulnerable and marginalized communities across 5 states of India including Maharashtra, Bihar, Gujarat, Tamil Nadu, and Dadra Nagar Haveli.

### Heartening impact of ‘Transrail Aarogya’:

- 4 New ambulances donated.
- 1977 patients benefitted through our Ambulance services.
- 14197 patients benefitted through General Medical Treatment.
- 1455 patients benefitted through Eye Treatment.
- 137 patients operated for cataract surgery.
- 712 patients availed of dialysis treatment.









# Contact Us

---

## Corporate Office

### Transrail Lighting Limited

A Wing, 5<sup>th</sup> Floor, Fortune 2000,  
Block G, Bandra Kurla Complex, Bandra East,  
Mumbai – 400051, India

**Phone:** +91-22-6197 9600

**Fax:** +91-22-6197 9666

**Website:** [www.transrail.in](http://www.transrail.in)

**Email:** [enquiry@transrailighting.com](mailto:enquiry@transrailighting.com)

## Manufacturing Units

### Deoli Plant (Tower)

B-1/1,  
MIDC Growth Centre,  
Deoli, Wardha – 442101,  
Maharashtra, India

**Phone:** +91-7158 203308/9

### Vadodara Plant (Tower)

Vadadla, Jarod-Samlaya Road,  
Taluka – Savli,  
Vadodara – 391520,  
Gujarat, India

**Phone:** +91- 787 4798 535

### Silvassa Plant (Conductor)

Survey No.:178/182,  
Village – Amboli,  
Silvassa – 396230,  
(D&NH), India

**Phone:** +91-260-3086 305

### Silvassa Plant (Poles)

Survey No. 227,  
Khanvel-Khardi Road,  
Village – Khardi, Silvassa – 396230,  
(D&NH), India

**Phone:** +91-260-2641 666



[www.transrail.in](http://www.transrail.in)